

Erosion Control Connection

Freehold Soil Conservation District

Inspect What You Expect by Michael Chase

Pre-Construction Meetings
Freehold Soil Conservation District highly recommends scheduling a pre-construction meeting to review all the requirements of soil erosion and sediment control plans.

“Inspect What You Expect” is kind of a catchy phrase. It was a directive that was given to all of the managers at a company I worked for years ago by industry professional John Lake. This phrase has always stuck with me, and I have used it daily from managing business to conducting inspections on construction sites. For me, it has always been a reminder to manage all the assets under my control. In business, it is related to the management of your expenses, revenues, personnel, paperwork, and other resources. In stormwater, it pretty much means the same thing: Manage your responsibilities.

In business, you want to manage your expenses. You want to know your costs and maximize your return on every dollar you spend. In stormwater management, expenses may be what you are willing to pay for protection. Many times we look at the cheapest product or the lowest



Erosion controls in place

cost for application, thinking that we may save a dollar here or there without thinking in terms of longevity or performance. I see it time after time when I inspect, and most times I find what I expect: The cheaper application did not hold up, and the site requires another application. Now there are additional expenses beyond what it would have cost for a one-time installation of a better product or for using experienced applicators. (Continued on page 2)

Inside this issue:

Inspect What You Expect (cont.)	2
Construction Stormwater BMP Guide	3
Water Quality & NJ Brook Trout	3
Rutgers Product Testing Partnership	4

Construction Stormwater Permit RFA – Online E-Permitting

As of October 1, 2009 Stormwater Construction Permit (5G3-NJ0088323) Requests for Authorization (RFA) applications are no longer processed at the District office. Permittees are required to submit their applications and payments electronically online using NJDEP's

E-Permitting System. Information and instructions may be found at: <http://www.nj.gov/dep/dwq/hot.htm>.

Questions can be directed to NJDEP at 609.633.7021 or by email to Daniel Kuti at Daniel.kuti@dep.state.nj.us.

Inspect What You Expect (continued)



Rip Rap Apron

“In business, you want to manage your expenses. You want to know your costs and maximize your return on every dollar you spend.”

Sometimes it is the other extreme that creates additional expenses. These include activities like the purchase of additional BMPs that are not necessary, such as silt fence installed at the top of a slope or a combination of BMPs at a discharge point when one properly installed BMP would have been sufficient.

You need to determine if you are paying for too much, or if you are not paying enough, and what protection you are getting for each dollar of expense. And follow up—or as I was taught: “Inspect What You Expect.”

In business, revenues are thought of in terms of dollars received. As long as your revenues exceed your expenses, you are making a profit. In stormwater management, revenue takes on different forms. Revenue can be the fine you did not have to pay or the days of work that were not lost because you remained in compliance. It could also be the mitigation you did and not having to pay for cleaning up a stream, since you had no pollutants released from your site. Revenue can also take the form of your reputation. How are you and your company perceived by the looks of your construction-site conditions? Again, it is important for you to “Inspect What You Expect.”

Personnel are a very important aspect of business. Management of personnel requires evaluation of performance. It is important to evaluate the number of employees: Do you have enough or do you need additional employees? Do you have the right person in the right position? Are your employees adequately trained? In stormwater, you need to address the following: Who is responsible for writing your SWPPP or erosion and sediment control plan? Who is responsible for implementation of the plan and for providing amendments to the plan? Who does your installations of BMPs, and are they qualified? Who is inspecting your site, and what are their qualifications, and, more importantly, are they protecting you? If you do

not know the answer to many of these questions, then it may be time to “Inspect What You Expect.”

Paperwork or documentation is critical in business. It may be needed to track opportunities, to document a process, to record an event, to track revenues and expenses, or to discipline an employee. It is also critical in stormwater management. Do you have all the pertinent documentation filed? Are the pertinent dates and certification signatures in place on the documentation? Is your plan current and do you have all the inspections required documented with a copy in the plan? Here is another opportunity to “Inspect What You Expect.”

Resources cover many facets of business, including personnel. Resources are those items necessary to produce a product. They include the plan, the personnel, raw materials, equipment, time, money, and management. It is definitely the same when related back to stormwater management.

First of all, do you have an approved plan? Do you have dedicated, qualified personnel for stormwater applications? Do you have such raw materials as blankets, mulch, bags, or rocks for installation as required in the plan? Do you have the equipment or is it available when required for applications of BMPs? Have you allotted enough time for installation and maintenance of BMPs? Have you allocated enough money for stormwater management? And most importantly, is it being managed properly? If you question any of these items, it’s time to “Inspect What You Expect.”

— Michael Chase

Author's Bio: Michael Chase, CPESC, CPSWQ, CESSWI, president of the IECA Board of Directors

Reprinted with permission from *Erosion Control Magazine* Sept/Oct 2009 issue.



Construction Stormwater BMP Guide

A **Stormwater Best Management Practices Guide for Construction Sites** has been created to provide builders with a tool to aid in achieving compliance of the provisions of the New Jersey Statewide Stormwater Permitting Program.

By installing and maintaining basic Best Management Practices (BMPs), construction site operators can do their share to protect New Jersey's water resources from the harmful effects of construction site stormwater runoff.

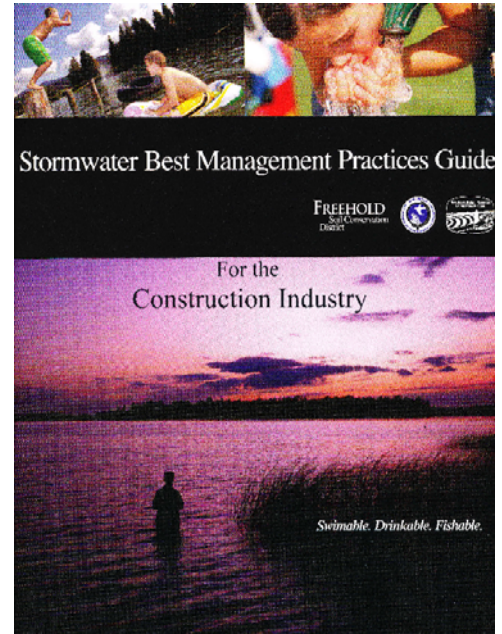
Active construction sites already have, or will receive, a copy of this user-friendly guide. District field staff will briefly explain the guide and answer any questions to ensure this tool will be utilized as required by the NJ Stormwater Permitting Program.

The record keeping and inspection process is streamlined by using the

Routine Inspection Sheet and the Annual Certification forms, which are provided in each guide.

The guide offers numerous BMP suggestions and tips for ease of implementation and also includes a Product Suppliers list that includes an extensive variety of erosion control vendors and products to aid in the completion of site work.

Please contact our office at 732.683.8500 or by email at info@freeholdscd.org if you would like a copy of the Stormwater Best Management Practices Guide.



Raising Brook Trout Educates on Water Quality Issues

Have you ever wondered what soil erosion control has to do with raising brook trout? Probably not, but there is a direct relationship between construction sites and brook trout habitats.

For the past four years, as part of **Trout in the Classroom**, Freehold SCD has provided tanks and equipment to 15 schools and environmental centers to educate thousands of students and residents about clean water issues. A tank in our office helps to raise the awareness of developers and builders about

their potential to impact water quality .

Developers and students have learned that sediment is the number one water pollutant by volume in New Jersey. Sediment can quickly fill rivers, lakes and reservoirs, reducing fish populations and storage capacities of municipal water supplies.

The use of proper erosion control measures helps to protect the natural habitat of the native New Jersey brook trout, along with our drinking water supplies.





Freehold Soil Conservation District

4000 Kozloski Road – PO Box 5033
Freehold, NJ 07728

Phone: 732-683-8500

Fax: 732-683-9140

E-mail: info@freeholdscd.org

**Serving Middlesex & Monmouth
Counties Over 70 Years**

www.freeholdscd.org

Editor: Karen B. Rowe

Rutgers Product Testing Partnership by Paul Califano

The Freehold Soil Conservation District, in cooperation with the Rutgers University Department of Capital Planning and Development, is in the early stages of teaming up to evaluate new soil erosion and sediment control products on campus construction sites.

Rutgers University is in contact with manufacturers to supply products, such as vegetated rip-rap, sediment barriers and inlet protection for the trials. The performance of the products will be

documented by the university and will be evaluated by the State Soil Conservation Committee, Freehold SCD and Rutgers University. The results may assist with granting approval for use of new products on construction sites regulated by soil conservation districts.

Watch for updates on this partnership in future newsletters and on our website at www.freeholdscd.org.



Sediment barriers, like the wattle bordering the curb above, may be tested at Rutgers University.